



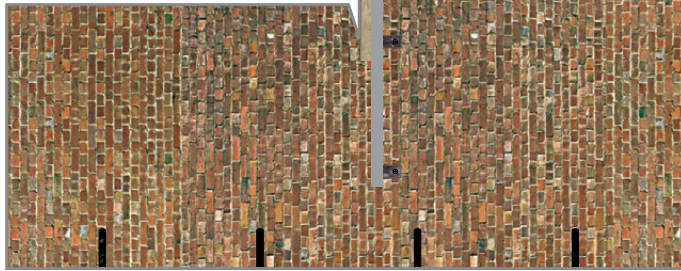
Rear door (back)



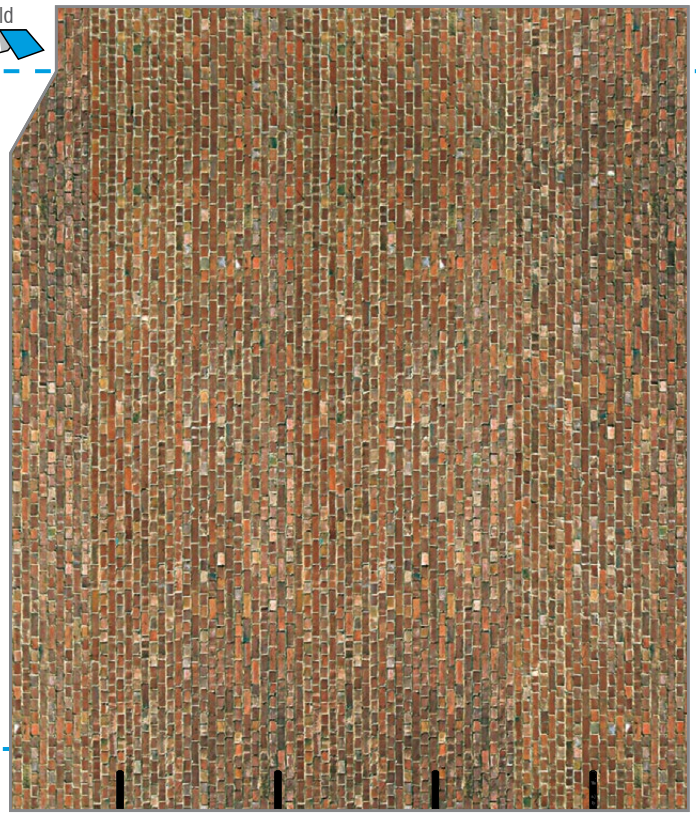
Signs



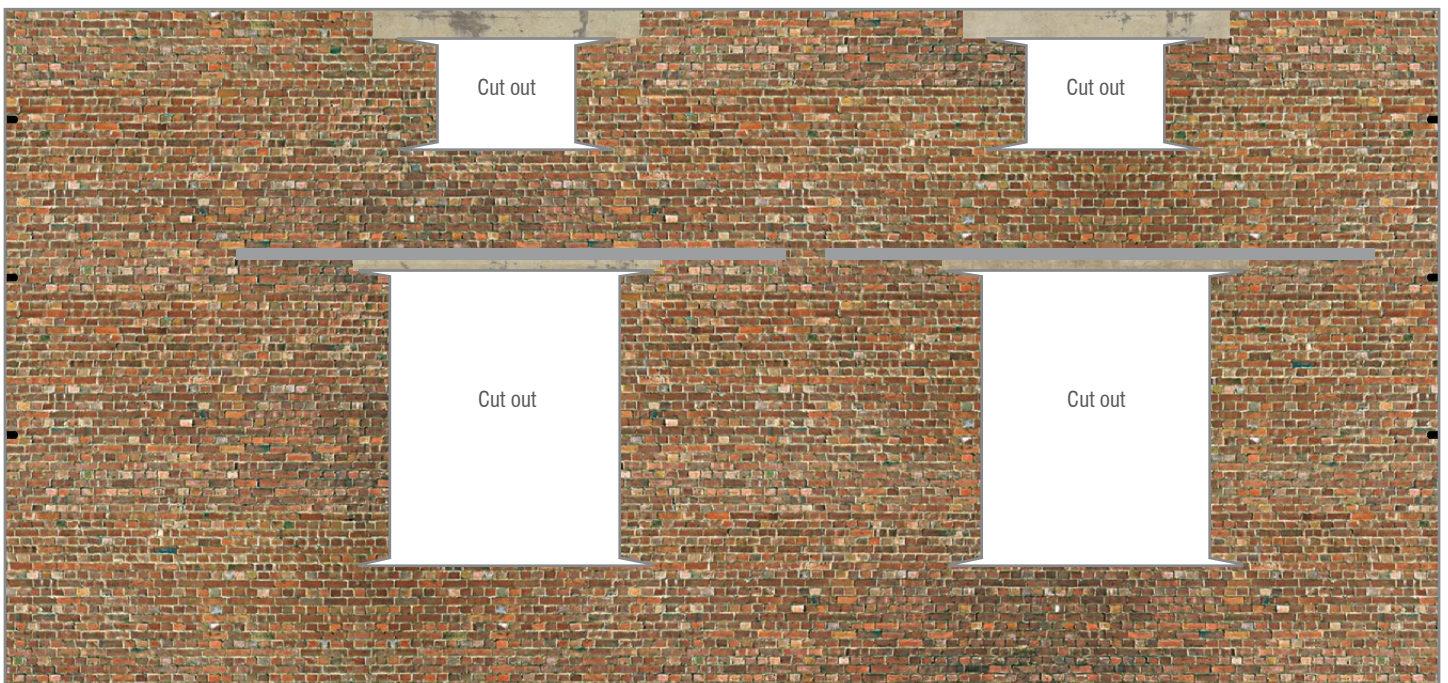
Rear door edges



Side wall A cover layer



Side wall B cover layer

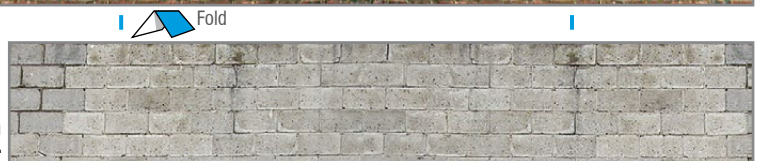


Front wall cover layer

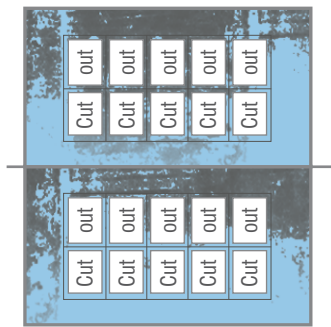


Timber  
sheeting for  
windows

Rear platform  
cover layer





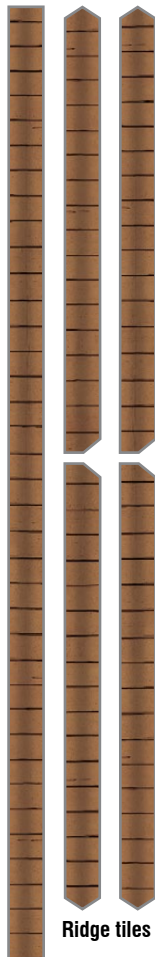


Windows overlays

Cut out (with sharp scalpel)  
and mount on to clear film.



Front doors (backs)



Ridge tiles



Side doors (backs)



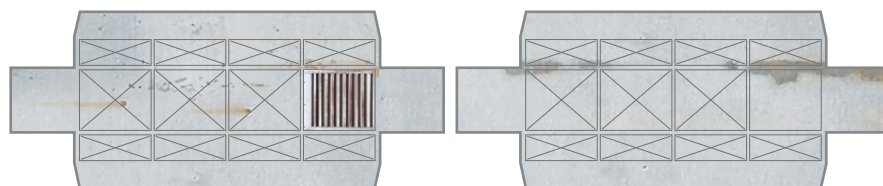
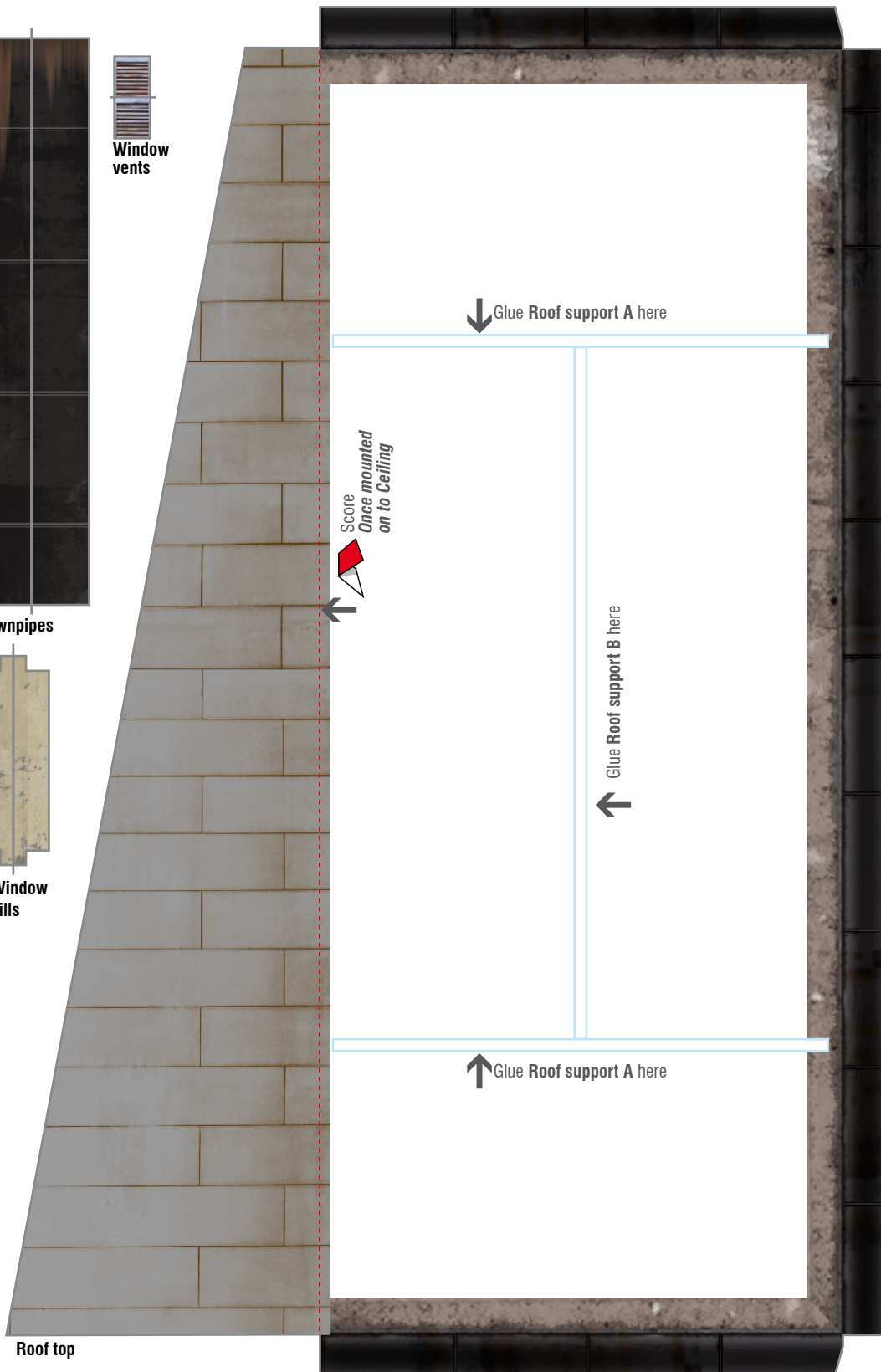
Downpipes



Window sills



Window vents

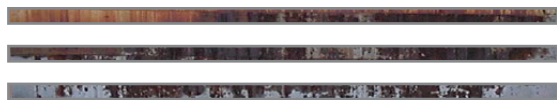


Exhaust duct cover layers





Ceiling



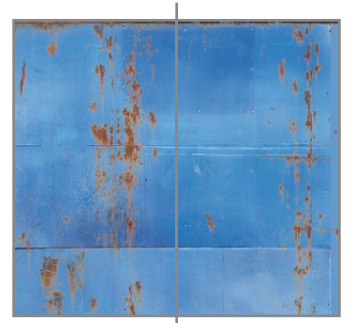
Door rails



Rear door rail



Run marker pen  
along edges



Front doors (front)



Run marker pen  
along edges



Side doors (front)



Run marker pen  
along edges



Rear door (front)



Run marker pen  
along edges



Run marker pen  
along edges



Leader  
heads

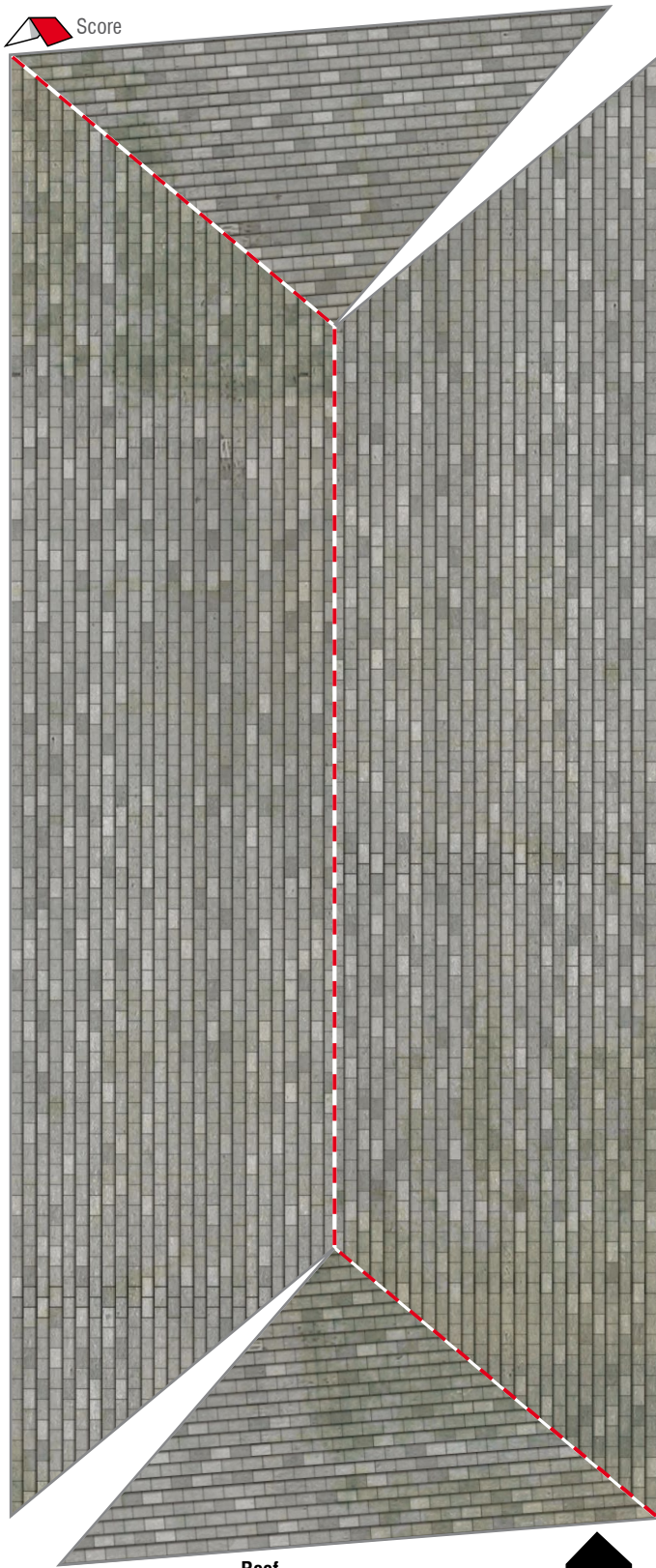


Run marker pen  
along edges



Medium card





Roof

Run marker pen  
along edges



Run marker pen along  
edges



Rear platform edges



Internal side wall B



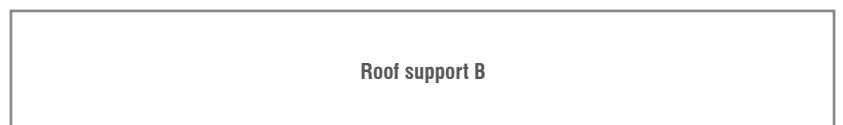
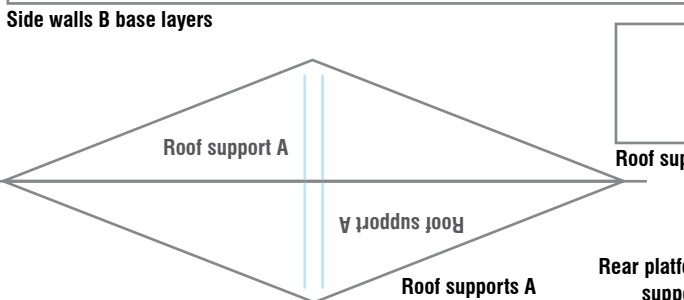
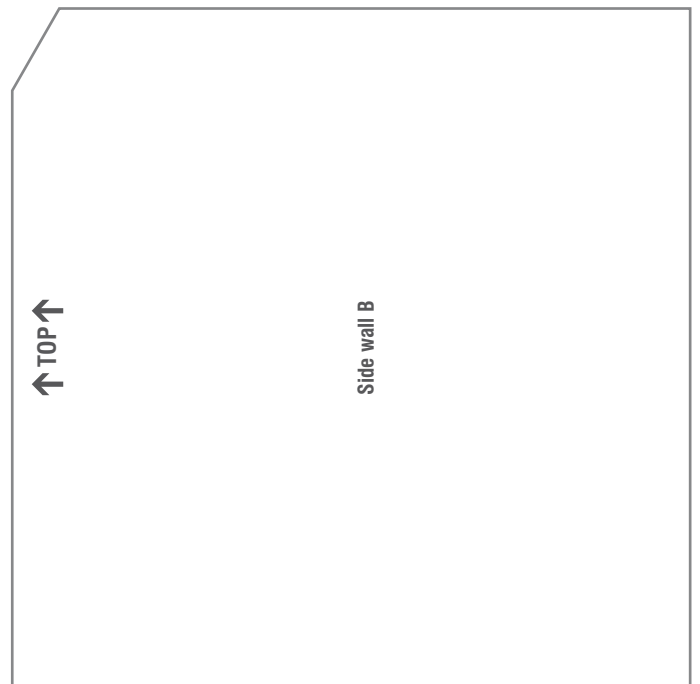
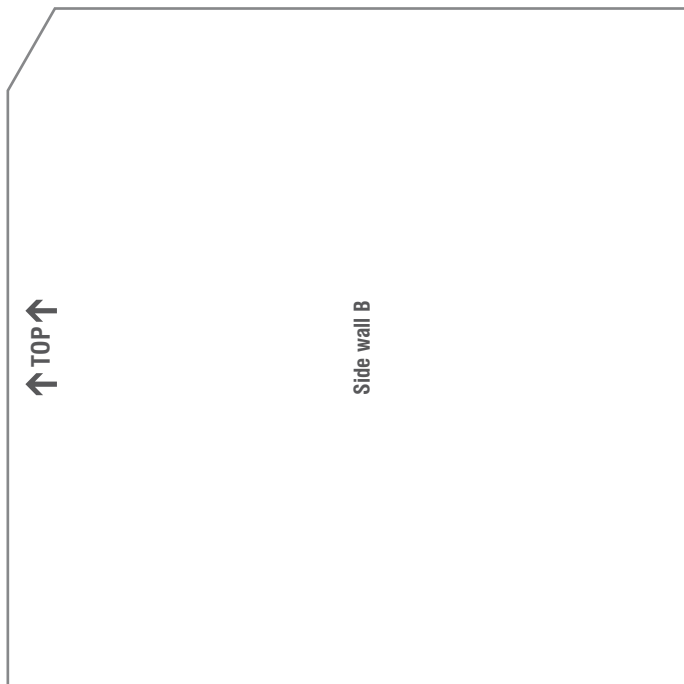
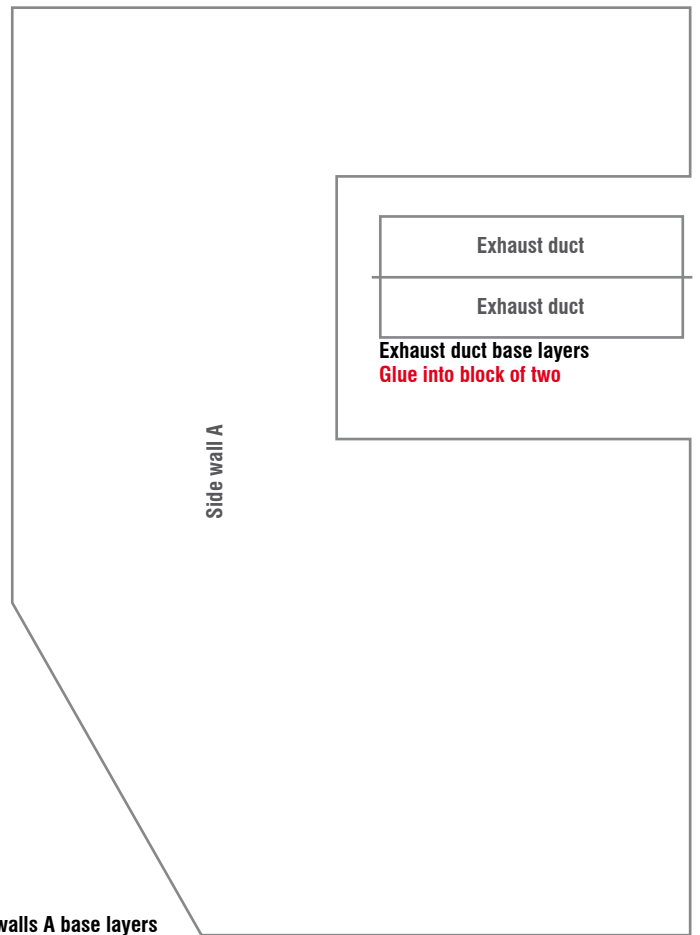
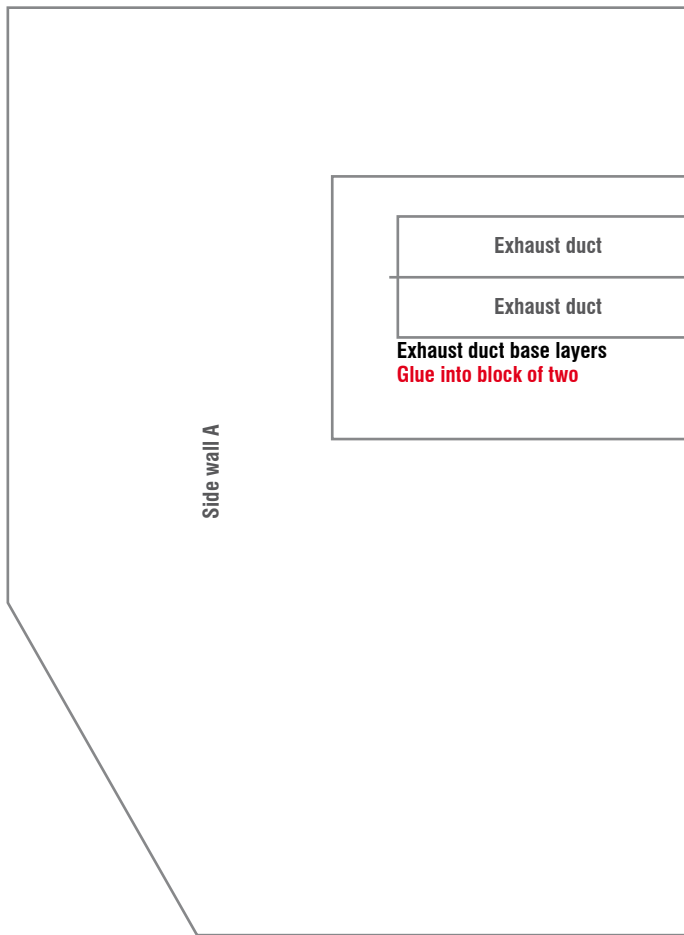
Internal side wall A



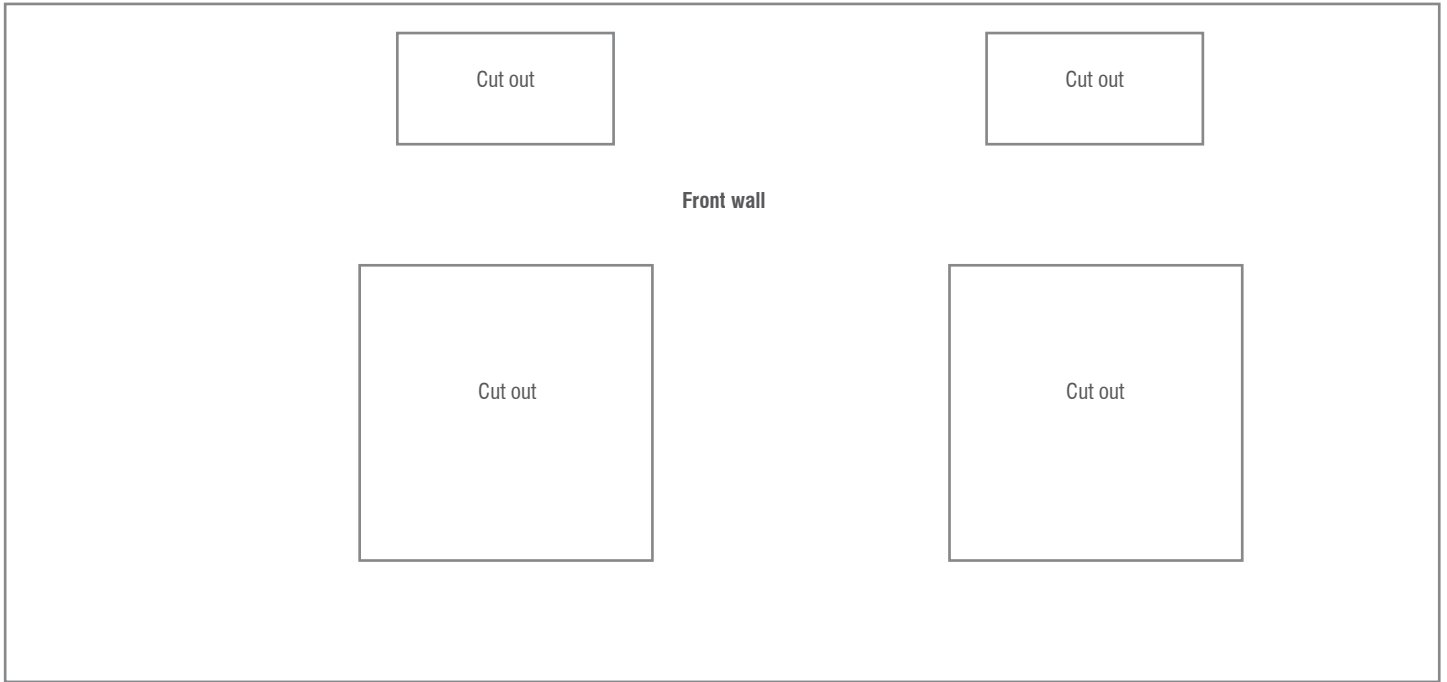
Rear platform top



Medium card







Front wall base layer



Internal front wall



Internal rear wall



Platform top



Score



Score



Awning

Glue Awning roof here



Glue this face to wall



Run marker  
pen along  
edges



Industrial A Warehouse → T024a

Print page at 63% for TT120

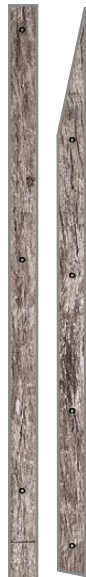
Cover layers and  
card mounted elements

scalescenes.com 2023

Run marker  
pen along  
edges



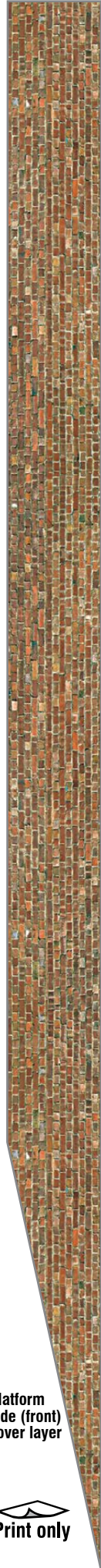
Cut along line before mounting on to card



Platform  
edges



Medium card



Platform  
side (front)  
cover layer



Print only

Flashing



The diagram shows a cross-section of a platform. On the left, a thick, dark grey layer is labeled "Platform side (front) base layer". To its right is a large, light grey rectangular area labeled "Platform side". A thin black line separates the two regions. The entire diagram is enclosed in a thin black border.

Cut out



Glue Flashing here



**Bargeboards**



Score

Platform support	Platform support
Platform support	Platform support
Platform support	Platform support



**Platform support**

Cut out

Glue Rear platform here

Platform support



scale  
scenes  
.com

scalescenes.com 2023